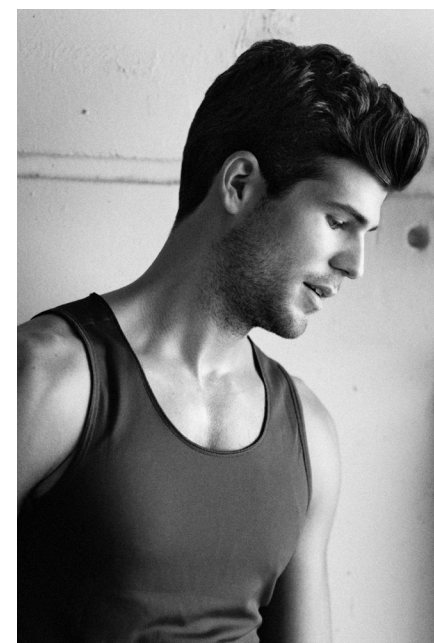


MOLDING CLAY

High hold with medium shine

Concentrated styling power lets you manipulate hair into any style. Made with natural extracts and beeswax, this unique compound maintains touchable shape and texture. Works well for short styles and those who seek a styling product with a more natural, subtle fragrance. Molding Clay is also a product of choice for those who frequently engage in sports and tend to perspire heavily.

Application: Press into Clay firmly, remove a small amount and rub between palms or fingertips to soften product. Distribute evenly through towel dried hair.



Features	Benefits
Beeswax	All-natural holding power
Kaolin	White clay from the Paris Basin, naturally healing and stimulating and good for sensitive skin and scalp
Bentonite	Specialty clay used to increase viscosity, provides smoother texture and offers good application properties
PEG-13 Sunflower Glycerides	Provides great conditioning for hair and scalp
All-Natural Essential Oils	No synthetic fragrance. Orange, Peppermint, Spearmint and Lime Oils soothe, refresh, cool and naturally fragrance the product

Ingredients: Petrolatum, Beeswax (Cera Alba), Dicaprylyl Maleate, PEG-13 Sunflower Glycerides, Bentonite, Propylene Glycol, Isoceteth-20, Titanium Dioxide, Mica, Kaolin, Thymus Vulgaris (Thyme) Extract (*Thyme), Quillaja Saponaria Bark Extract, Citrus Grandis (Grapefruit) Fruit Extract **, Citrus Aurantium Dulcis (Orange) Fruit Extract **, Rosmarinus Officinalis (Rosemary) Leaf Extract (*Rosemary Leaves), Citral, Limonene, Linalool, Citrus Aurantium Dulcis (Orange) Oil, Citrus Aurantifolia (Lime) Oil, Mentha Piperita (Peppermint) Oil, Mentha Viridis (Spearmint) Leaf Oil, Methylparaben. *Source. **Certified Organic

VOC Level: 0%

Available sizes: 50g/1.7oz 85g/3.0oz